

WasteMaid®

FOOD WASTE DISPOSERS Elite

2085-BF

Batch Feed



1 1/4 HP

5 YEAR WARRANTY

Batch Feed Disposer

The WASTEMAID ELITE batch feed disposer utilizes a stopper/actuator which makes operation safer and quieter and eliminates the need for an outside on/off switch.

Corrosion Proof

The WASTEMAID ELITE 2085-BF carries a lifetime warranty against failure due to corrosion.

Permanent Magnet Motors

WASTEMAID ELITE motors offer maximum torque instantly with the power to cut through potential jams.

Compact and Lightweight

The compact design of your WASTEMAID ELITE allows inclusion where limited under counter space is available.

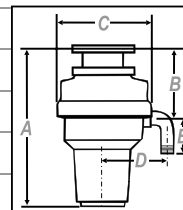


BIO SHIELD (Antimicrobial) for **ODOR PROTECTION!**
Disposers are treated with an antimicrobial agent molded inside providing protection against odor causing bacteria growth.



THE TORQUE MASTER GRINDING SYSTEM is a combination of computer designed and balanced components working in unison to provide superior torque grind speed and long system life.

SPECIFICATIONS	MODEL #2085-BF
HORSEPOWER	1 1/4 HP
MOTOR SPEED RPM	2800 RPM
VOLTAGE	220v - 240v
WATTAGE	900
AMPS	4
CYCLES	50/60
MOTOR TYPE	Permanent Magnet
DRAIN OUTLET	Polycarbonate 940
FEED	Batch Loading
WASTE ELBOW	ABS
GRIND RING	Stainless Steel
SWIVEL IMPELLERS	Cast Stainless Steel
BALANCED TURNTABLE	Stainless Steel
HOPPER	ABS
DRAIN HOUSING	Thermoset Polymer
OVERLOAD PROTECTOR	Manual Reset
SINK FLANGE	Polyamide 66
STOPPER	Polycarbonate
BEARINGS	Permanently Lubricated, Sleeve Type
SOUND SHELL	Full
UNIT WEIGHT	7.7 KG
MEASUREMENT A	494 mm
MEASUREMENT B	240 mm
MEASUREMENT C	220 mm
MEASUREMENT D	140 mm
MEASUREMENT E	70 mm
LIFETIME CORROSION GUARANTEE	Yes



ANAHEIM (UK) LIMITED

TEL: +44 (0) 1483 572 294

Email: ContactUs@AnaheimUK.com

www.WasteMaid.co.uk

All Waste Maid Elite Disposers are compliant with the EC Directive regards RoHS.

©2013, All Rights Reserved

SS-2085-UK-131