

WasteMaid[®]

FOOD WASTE DISPOSERS *Elite*

1880



5/8 HP



BIO SHIELD (Antimicrobial) for **ODOR PROTECTION!**
Disposers are treated with an antimicrobial agent molded inside providing protection against odor causing bacteria growth.



THE **TORQUE MASTER GRINDING SYSTEM** is a combination of computer designed and balanced components working in unison to provide superior torque grind speed and long system life.

MASTER EDITION

Easy and Fast to Install
WASTEMAID ELITE disposers feature Speed Master Mounting, an exclusive system that provides fast and economical installation.

Corrosion Proof
The WASTEMAID ELITE 1880 carries a lifetime warranty against failure due to corrosion.

Permanent Magnet Motors
WASTEMAID ELITE motors offer maximum torque instantly with the power to cut through potential jams.

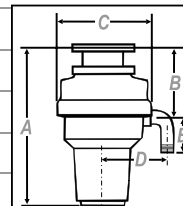
Compact and Lightweight
The compact design of your WASTEMAID ELITE allows inclusion where limited under counter space is available.

Removable Splash Guard
All WASTEMAID ELITE models have a removable splash guard, ideal for easy cleaning and replacement.

SPECIFICATIONS

MODEL #1880

HORSEPOWER	5/8 HP
MOTOR SPEED RPM	2700 RPM
VOLTAGE	220-240v
WATTAGE	490
AMPS	3.25
CYCLES	50/60
MOTOR TYPE	Permanent Magnet
SPLASH GUARD	EPDM Rubber
DRAIN OUTLET	Polycarbonate 940
GRIND RING	Stainless Steel
SWIVEL IMPELLERS	Cast Stainless Steel
BALANCED TURNTABLE	Stainless Steel
BALANCED ARMATURE SHAFT	Stainless Steel
HOPPER	ABS
DRAIN HOUSING	Thermoset Polymer
APPLIANCE PROTECTOR	Manual Reset
SINK FLANGE	Polyamide 66
STOPPER	SUS304/NBR/ABS
BEARINGS	Permanently Lubricated, Sleeve Type
SOUND SHELL	Full
SINK WASTE	90 MM
UNIT WEIGHT	5.45 KG
MEASUREMENT A	378 MM
MEASUREMENT B	185 MM
MEASUREMENT C	220 MM
MEASUREMENT D	140 MM
MEASUREMENT E	70 MM
LIFETIME CORROSION GUARANTEE	Yes



wastemaidshop.co.uk

All Waste Maid Elite Disposers are compliant with the EC Directive regards RoHS.

SS-1880-UK-131